

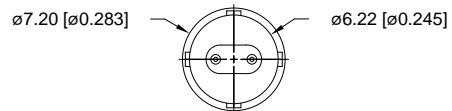
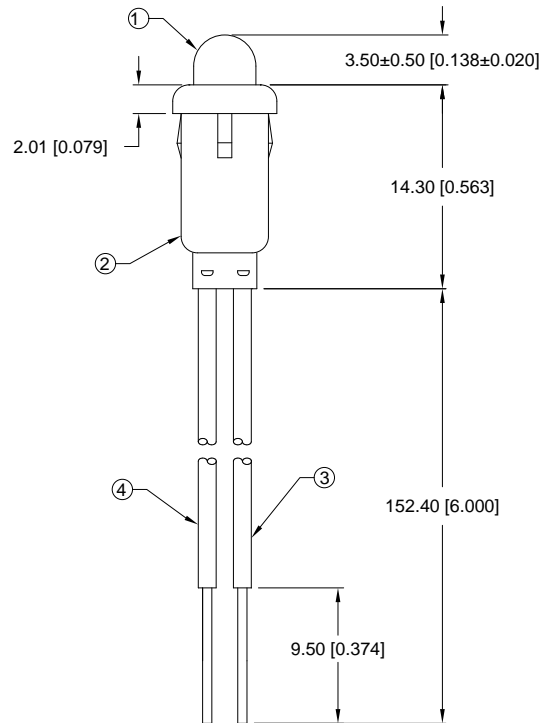
DATE

REVISIONS

REV

DRAWING NUMBER
SSI-LXH600XX-150

REV



PANEL HOLE .250"
PANEL THICKNESS: .030" MIN.

UNLESS OTHERWISE SPECIFIED TOLERANCE IS $\pm .25\text{mm}$ (± 0.010 ")

NOTES:

1. SSL-LX509F3XX LED.
2. SSH-LXH600 HOUSING, BLACK.
3. ANODE LEAD: LXP-WST24RDT0C, 24 AWG STRANDED, TOP COATED, RED INSULATION, CUT 160mm LONG, STRIP 4mm & 9.5mm.
4. CATHODE LEAD: LXP-WST24BLT0C, 24 AWG STRANDED, TOP COATED, BLACK INSULATION, CUT 160mm LONG, STRIP 4mm & 9.5mm.

RELIABILITY NOTE

OUR MANY YEARS OF EXPERIENCE DATA ACCUMULATION INDICATE THAT SOLDER HEAT IS A MAJOR CAUSE OF EARLY AND FUTURE FAILURE. PLEASE PAY ATTENTION TO YOUR SOLDERING PROCESS.



290 E. HELLEN ROAD
PALATINE, ILLINOIS 60067
(847) 359-2790

CONFIDENTIAL INFORMATION

THE INFORMATION CONTAINED IN THIS DOCUMENT IS THE PROPERTY OF LUMEX INCORPORATED. EXCEPT AS SPECIFICALLY AUTHORIZED IN WRITING BY LUMEX INCORPORATED, THE HOLDER OF THIS DOCUMENT SHALL KEEP ALL INFORMATION CONTAINED HEREIN CONFIDENTIAL AND SHALL PROTECT SAME IN WHOLE OR IN PART FROM DISCLOSURE AND DISSEMINATION TO ALL THIRD PARTIES.

DATE:	DWN:	CHK'D:	APPD:
SCALE:	N/A		

T-5mm (T-1 3/4) LED PANEL MOUNT INDICATOR,
'X' COLOR DIFFUSED, WITH 6" LEADS.

PAGE 1 OF 1

DRAWING NUMBER
SSI-LXH600XX-150

REV